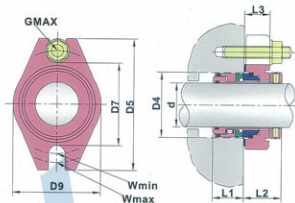
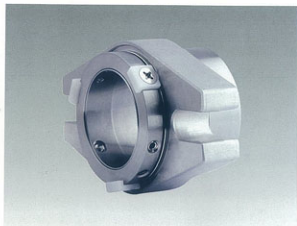


# Cartridge Mechanical Seals

## LYGU2

- **Operational Conditions:**  
 Temperature: -20℃ to +210℃  
 Pressure: ≤ 2.5MPa  
 Speed: ≤ 15m/s
- **Materials:**  
 Stationary Ring: Q1, A, V1  
 Rotary Ring: A, Q1, U2  
 Secondary Seal: E, V, Aflax, kalrez  
 Spring and Metal parts: F, G, M
- **Applications:** Clean water, sewage water, oil and other moderately corrosive fluids.



规格/Size (公制/Metric)	D5	D7	L3	D9	D4		W		G	L1	L2
					MIN	MAX	MIN	MAX			
24	101.6	55.6	20.7	56.1	40.0	48.0	69.9	88.9	12	28.6	31.8
25	101.6	55.6	20.7	56.1	41.0	48.0	69.9	88.9	12	28.6	31.8
28	104.8	58.8	20.7	59.3	44.0	50.0	73.1	92.1	12	28.6	31.8
30	108.0	61.9	20.7	62.4	46.0	54.0	76.2	95.3	12	28.6	31.8
32	108.0	61.9	20.7	62.4	48.0	54.0	76.2	95.3	12	28.6	31.8
33	108.0	61.9	20.7	62.4	49.0	55.0	76.2	95.3	12	28.6	31.8
35	108.0	66.7	20.7	67.2	51.0	59.0	81.0	95.3	12	28.6	31.8
38	114.3	71.5	22.3	72.0	57.2	62.0	85.8	101.6	12	28.6	33.4
40	114.3	71.5	22.3	72.0	58.0	64.0	85.8	101.6	12	28.6	33.4
43	120.7	74.6	22.3	75.1	61.0	67.0	88.9	108.0	12	28.6	33.4
45	127.0	77.8	23.8	78.3	63.5	69.0	92.1	114.3	12	30.2	35.0
48	133.4	81.0	23.8	81.5	66.7	72.0	95.3	120.7	12	30.2	35.0
50	133.4	81.0	23.8	81.5	68.0	74.0	95.3	120.7	12	30.2	35.0
53	139.7	84.2	25.4	84.7	71.0	77.0	101.6	123.9	16	30.2	36.5
55	146.1	87.3	25.4	87.8	74.0	79.0	104.8	130.2	16	30.2	36.5
58	165.1	95.3	25.4	98.9	79.4	85.7	115.9	146.0	20	30.2	36.5
60	165.1	95.3	25.4	98.9	79.4	85.7	115.9	146.0	20	30.2	36.5
63	177.8	111.2	25.4	121.2	85.8	101.6	131.8	158.7	20	28.6	41.2
65	177.8	111.2	25.4	121.2	88.9	101.6	131.8	158.7	20	28.6	41.2
68	177.8	111.2	25.4	121.2	92.1	101.6	131.8	158.7	20	28.6	41.2
70	177.8	111.2	25.4	121.2	92.1	101.6	131.8	158.7	20	28.6	41.2
75	190.5	125.4	31.7	130.7	98.5	114.3	146.1	171.4	20	30.2	50.8
80	190.5	125.4	31.7	130.7	101.6	114.3	146.1	171.4	20	30.2	50.8
85	203.2	135.0	31.7	140.2	108.0	123.8	155.6	184.1	20	30.2	50.8
90	215.9	144.5	31.7	149.7	114.3	133.3	165.1	196.8	20	30.2	50.8
95	215.9	144.5	31.7	149.7	117.5	133.3	165.1	196.8	20	30.2	50.8
100	228.6	154.0	31.7	156.1	123.9	139.7	174.7	209.5	20	30.2	50.8