

Cartridge Mechanical Seals

LYSAI

● **Operational Conditions:**

Temperature: -50℃ to +204℃

Pressure: ≤ 1.2MPa/S

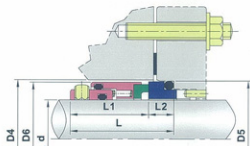
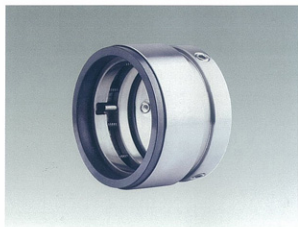
● **Materials:**

Stationary Ring: Q2, V1

Out barrel: F vs B, U2, Q2

Secondary seal: V, E, R, K

Spring and Metal parts: G



规格/Size (公制/Metric)	L1	L	L2	D5	D6	D4
18	27.90	37.50	9.6	33	32.00	34
20	27.90	37.50	9.6	35	34.00	36
22	27.90	37.50	9.6	37	36.00	38
24	29.99	40.00	10.1	39	38.00	40
25	29.99	40.00	10.1	40	39.00	41
28	32.40	42.50	10.1	43	42.00	44
30	32.40	42.50	10.1	45	44.00	46
32	32.40	42.50	10.1	48	46.00	48
33	32.40	42.50	10.1	48	47.00	49
35	32.40	42.50	10.1	50	49.00	51
38	33.90	45.00	11.1	56	54.00	58
40	33.90	45.00	11.1	58	56.00	60
43	33.90	45.00	11.1	61	59.00	63
45	33.90	45.00	11.1	63	61.00	65
48	33.90	45.00	11.1	66	64.00	68
50	34.40	47.50	11.1	70	66.00	70
53	34.40	47.50	13.1	73	69.00	73
55	34.40	47.50	13.1	75	71.00	75
58	38.90	52.50	13.1	78	78.00	83
60	38.90	52.50	13.6	80	80.00	85
63	38.90	52.50	13.6	83	83.00	88
65	38.90	52.50	13.6	85	85.00	90
68	37.40	52.50	15.1	90	88.00	93
70	44.90	60.00	15.1	92	90.00	95
75	44.90	60.00	15.1	97	99.00	104
80	44.20	60.00	15.8	105	104.00	119
85	44.20	60.00	15.8	110	109.00	114
90	49.20	65.00	15.8	115	114.00	119
95	49.20	65.00	15.8	120	119.00	124
100	49.20	65.00	15.8	125	124.00	129