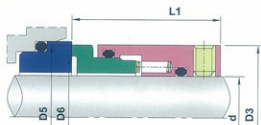
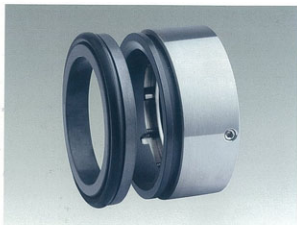


## O-ring Mechanical Series

LY891

- **Operational Conditions:**  
 Temperature: -20°C to +180°C  
 Pressure: ≤ 2.5MPa  
 Speed: ≤ 15m/s
- **Materials:**  
 Stationary Ring: Q2, Q1, U2  
 Rotary Ring: B, A, Q1, Q2, U2  
 Secondary Seal: P, E, V  
 Spring and Metal Parts: F, G, M
- **Applications:** Clean water, sewage water, oil and other moderately corrosive fluids.



规格/Size (公制/Metric)	d	D5	D6	D3	L1	规格/Size (英制/Inch)	d	D5	D6	D3
25	25	37.5	32.5	39.3	34.9	1.000	25.4	37.5	32.5	39.3
28	28	40	35	42.3	34.9	1.125	28.5	40	35	42.3
30	30	42	37	44.5	34.9	1.250	31.7	44.5	39	46
32	32	44.5	39	46.0	44.4	1.375	34.9	47.5	42	49
33	33	45.5	40	47.5	44.4	1.500	38.1	50.5	45	52.5
35	35	47.5	42	49.0	44.4	1.625	41.2	55	49	57.2
38	38	50.5	45	52.5	44.4	1.750	44.4	58	52	60.3
40	40	53	47	55.6	44.4	1.875	47.6	61	55	63.5
42	42	56	50	58.7	44.4	2.000	50.8	63.6	57.6	66.7
43	43	56	50	58.7	44.4	2.125	53.9	67.8	61.8	69.8
45	45	58	52	60.3	44.4	2.250	57.1	70.8	64.8	73
48	48	61	55	63.5	44.4	2.375	60.3	73.5	67.5	76.2
50	50	63.6	57.6	66.7	44.4	2.500	63.5	76.5	70.5	79.4
53	53	67.8	61.8	69.8	44.4	2.625	66.6	79.5	73.5	82.6
55	55	67.8	61.8	69.8	44.4	2.750	69.8	86.4	76.9	85.7
58	58	70.8	64.8	73.0	44.4	2.875	73.0	88.4	79.9	88.9
60	60	73.5	67.5	76.2	44.4	3.000	76.2	90.4	83.9	96.8
63	63	76.5	70.5	79.4	44.4	3.125	79.3	94.2	87.7	100
65	65	79.5	73.5	82.6	44.4	3.250	82.5	97.3	90.3	103.2
70	70	83.4	76.9	85.7	44.4	3.375	85.7	100.3	93.3	106.4
75	75	90.4	83.9	96.8	44.4	3.500	88.9	104.9	97.4	109.5
80	80	94.2	87.7	100.0	44.4	3.625	92.0	106.9	99.4	112.7
85	85	100.3	93.3	106.4	44.4	3.750	95.2	110.5	102.5	115.9
90	90	104.9	97.4	109.5	44.4	3.875	98.4	113.7	105.7	119
95	95	110.5	102.5	115.9	44.4	4.000	101.6	116.9	108.9	122.2
100	100	116.9	108.9	122.2	44.4					