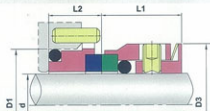
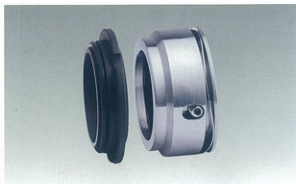


## O-ring Mechanical Series

### LY68D

- **Operational Conditions:**  
 Temperature:  $-40^{\circ}\text{C}$   $+200^{\circ}\text{C}$   
 Pressure:  $\leq 0.8\text{MPa}$   
 Speed:  $\leq 18\text{m/s}$
- **Materials:**  
 Stationary Ring: Q2, U2, B  
 Rotary Ring: U2, F  
 Secondary Seal: P, E, V  
 Spring and Metal parts: F, G
- **Applications:** Clean water, sewage water, oil and other moderately corrosive fluids.

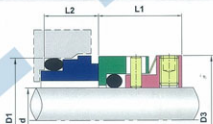


PUMP ref:	规格/Size 公制/Metric	D1	D3	L1	L2
SR1	20	30.00	32.4	20.0	10.70
SR2	30	41.30	44.0	21.4	10.90
SR3	35	47.00	50.8	22.0	12.20
SR4	45	58.30	62.4	22.9	11.60
SR5	55	69.60	76.0	29.3	13.00
SR6	75	92.20	99.2	31.1	14.50

## O-ring Mechanical Series

### LY68E

- **Operational Conditions:**  
 Temperature:  $-40^{\circ}\text{C}$   $+200^{\circ}\text{C}$   
 Pressure:  $\leq 0.8\text{MPa}$   
 Speed:  $\leq 18\text{m/s}$
- **Materials:**  
 Stationary Ring: Q2, U2, B  
 Rotary Ring: U2, F  
 Secondary Seal: P, E, V  
 Spring and Metal parts: F, G
- **Applications:** Clean water, sewage water, oil and other moderately corrosive fluids.



PUMP ref:	规格/Size 公制/Metric	D1	D3	L1	L2
10	30	40.0	41.0	19.1	9.3
20	35	44.5	45.5	19.1	9.2
30	50	62.0	61.9	21.1	10.4
40	70	85.0	88.9	25.8	14.1
50	80	95.0	101.0	25.8	16.2