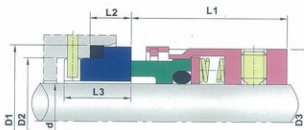
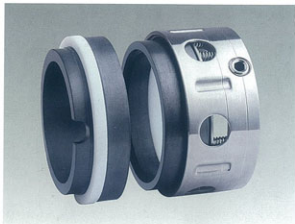


## O-ring Mechanical Series

### LY58U

- **Operational Conditions:**  
 Temperature: -20°C to +180°C  
 Pressure: ≤ 1.2MPa  
 Speed: ≤ 15m/s
- **Materials:**  
 Stationary Ring: V1,Q1,Q2,U2  
 Rotary Ring: B,A,Q1,Q2  
 Secondary Seal: P,E,V,M1,M2  
 Spring and Metal Parts: F,G,M
- **Seal Types:**  
 Standard: LYBP  
 Alternative: LYBP
- **Applications:** Clean water, sewage water, oil and other moderately corrosive fluids.



规格/Size (公制/Metric)	d	D3	D2	D1	L1	L2	L3
14	14	24	21	25	23.0	12.0	18.5
16	16	26	23	27	23.0	12.0	18.5
18	18	32	27	33	24.0	13.5	20.5
20	20	34	29	35	24.0	13.5	20.5
22	22	36	31	37	24.0	13.5	20.5
24	24	38	33	39	26.5	13.5	20.3
25	25	39	34	40	27.0	13.0	20.0
28	28	42	37	43	30.0	12.5	19.5
30	30	44	39	45	30.5	12.0	19.0
32	32	46	42	48	30.5	12.0	19.0
33	33	47	42	48	30.5	12.0	19.0
35	35	49	44	50	30.5	12.0	19.0
38	38	54	49	56	32.0	13.0	20.0
40	40	56	51	58	32.0	13.0	20.0
43	43	59	54	61	32.0	13.0	20.0
45	45	61	56	63	32.0	13.0	20.0
48	48	64	59	65	32.0	13.0	20.0
50	50	66	62	70	34.0	13.5	20.5
53	53	69	65	73	34.0	13.5	20.5
55	55	71	67	75	34.0	13.5	20.5
58	58	78	70	78	39.0	13.5	20.5
60	60	80	72	80	39.0	13.5	20.5
63	63	83	75	83	39.0	13.5	20.5
65	65	85	77	85	39.0	13.5	20.5
68	68	88	81	90	39.0	13.5	20.5
70	70	90	83	92	45.5	14.5	21.5
75	75	99	88	97	45.5	14.5	21.5
80	80	104	95	105	45.0	15.0	22.0
85	85	109	100	110	45.0	15.0	22.0
90	90	114	105	115	50.0	15.0	22.0
95	95	119	110	120	50.0	15.0	22.0
100	100	124	115	125	50.0	15.0	22.0